



BETHEL
SCHOOL DISTRICT

Bethel School District Regular Board Meeting

DECEMBER 11, 2024

Creating relevant, responsive and joyful school communities where all students thrive.

Board Business

1. Bond Oversight Committee Report: Chair Clark and Directors Farr and Nordling
2. Financial Statement: Andrea Belz
3. Integrated Guidance Annual Report: Remie Calalang
4. Superintendent's Report: Kraig Sproles
5. Policy Update, 1st Reading



BETHEL
SCHOOL DISTRICT

Aligning for Student Success: Integrated Programs Annual Report

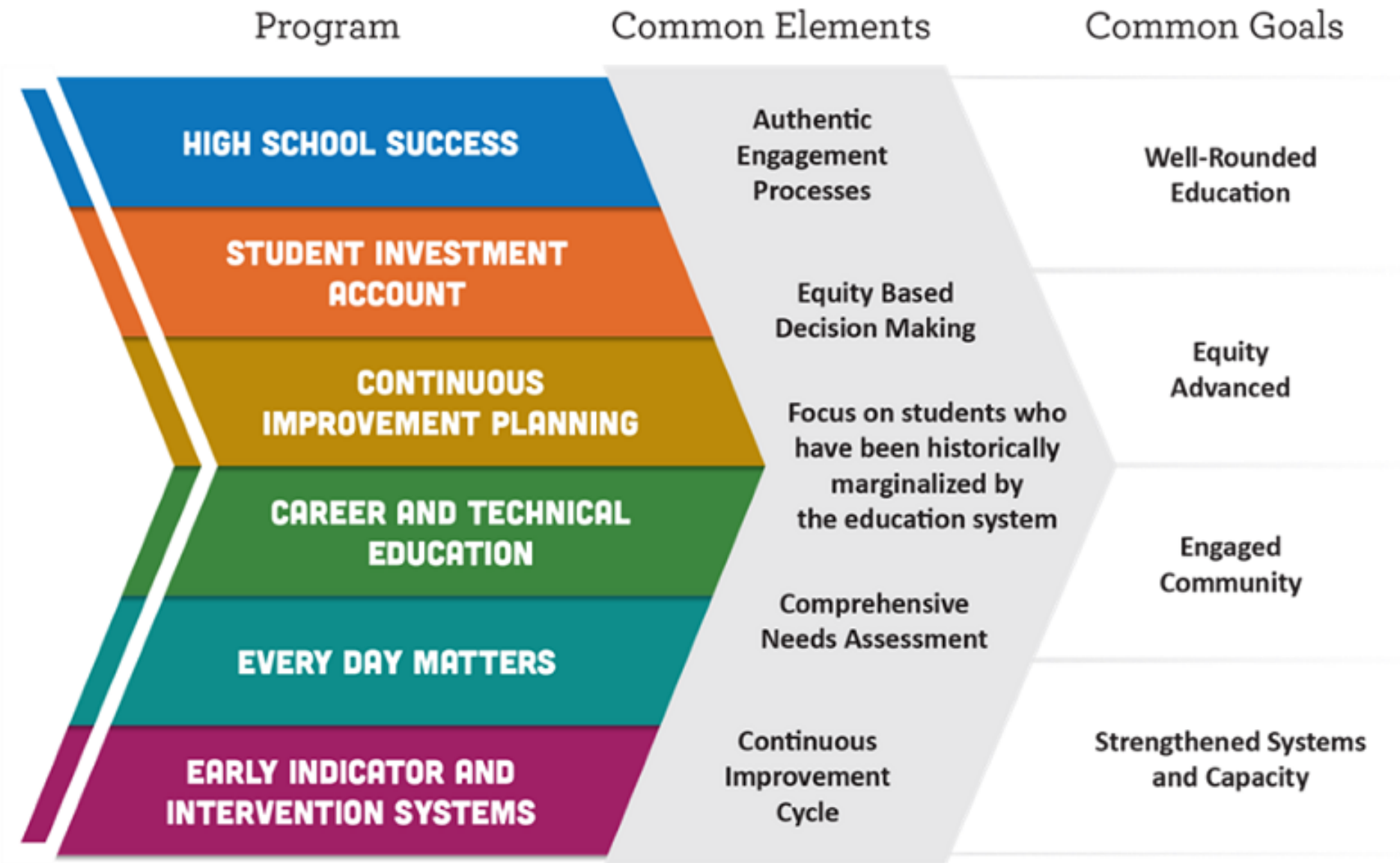
REMIE CALALANG

Reporting requirements

1. Provide background
2. Share information Bethel's progress and focus related to our Integrated Guidance Plan

Reporting requirements

1. Provide background and context
2. Share information Bethel's progress and focus related to our Integrated Guidance Plan



Program

Common Elements

Common Goals

HIGH SCHOOL SUCCESS

Authentic Engagement Processes

Well-Rounded Education

STUDENT INVESTMENT ACCOUNT

Equity Based Decision Making

Equity Advanced

CONTINUOUS IMPROVEMENT PLANNING

Focus on students who have been historically marginalized by the education system

Engaged Community

CAREER AND TECHNICAL EDUCATION

Comprehensive Needs Assessment

Strengthened Systems and Capacity

EVERY DAY MATTERS

Continuous Improvement Cycle

Summary of Program Purposes

- **Continuous Improvement Planning (CIP)** - A process involving educator collaboration, data analysis, professional learning and reflection to improve outcomes for students
- **Career and Technical Education – Perkins V** – Improve access to and participation in education and training programs that prepare learners for high-wage, high-skill, in-demand careers
- **Every Day Matters** - funding for Education Service Districts (ESDs) for technical assistance, coaching, and additional support focusing on student attendance, belonging, and engagement

Summary of Program Purposes

- **High School Success (HSS)** - Systems to improve graduate rates and college and career readiness
- **Student Investment Account (SIA)** - Meet students' mental health or behavioral needs, increase academic achievement, reduce disparities
- **Early Indicator and Intervention System (EIS)** - Development of a data collection and analysis system

ODE Allocation by Program

Program	2023 – 24	2024 - 25
High School Success (HSS/M98)	\$1,457,240.57	\$1,833,100.52
Student Investment Account (SIA)	\$5,160,708.94	\$5,277,188.64
Early Indicator and Intervention Systems (EIS)	\$14,902.25	\$14,716.41
Total Allocation	\$6,632,852.84	\$7,125,005.57

Bethel Investments

1. Early literacy

- Science of reading
- Class size reduction
- Culturally relevant library materials

2. Improved graduation rates

- Robust CTE offerings
- High School support (Wolverine 101 & instructional coaches)
- College & Career investments

Bethel Investments

1. Middle School Belonging

- Affinity groups
- Wayfinder SEL curriculum
- MS Athletics

2. Well-rounded education

- Art, music, language, movement
- Sources of Strength
- Counseling support

How do you see your progress contributing to the Outcomes and Growth Targets?
in your plan and your Longitudinal Performance
Discuss at least one Outcome where you have seen progress in implementation

4-year graduation rates have steadily increased

- Overall improvement for Bethel graduation rate
- WHS focus groups improved graduation rates
 - CTE participants and concentrators
 - English Language Learners
 - Latino
 - Students with disabilities

Contributing investments: 9th grade on-track, systems and structures to support students, CTE investments, Professional Development

2a. Discuss at least one Outcome where you have seen challenges or barriers to implementation.

Middle School sense of belonging

- Adopted and implemented SEL Curriculum (Wayfinder)
- Re-aligned middle school schedules

2b. Where have you experienced barriers, challenges, or impediments to progress toward your Outcomes and Strategies in your plan that you could use support?

Well-rounded education – declining enrollment and lack of adequate funding creates challenging staffing decisions between smaller class sizes and more elective options

Next Steps

1. 2025 – 27 Integrated Guidance Application
2. Review of 2023 – 25 IG Outcomes & Strategies
3. Community engagement

This process and work aligns with the [Bethel Blueprint](#) and District scorecards



Bethel School District Regular Board Meeting

DECEMBER 11, 2024

Creating relevant, responsive and joyful school communities where all students thrive.